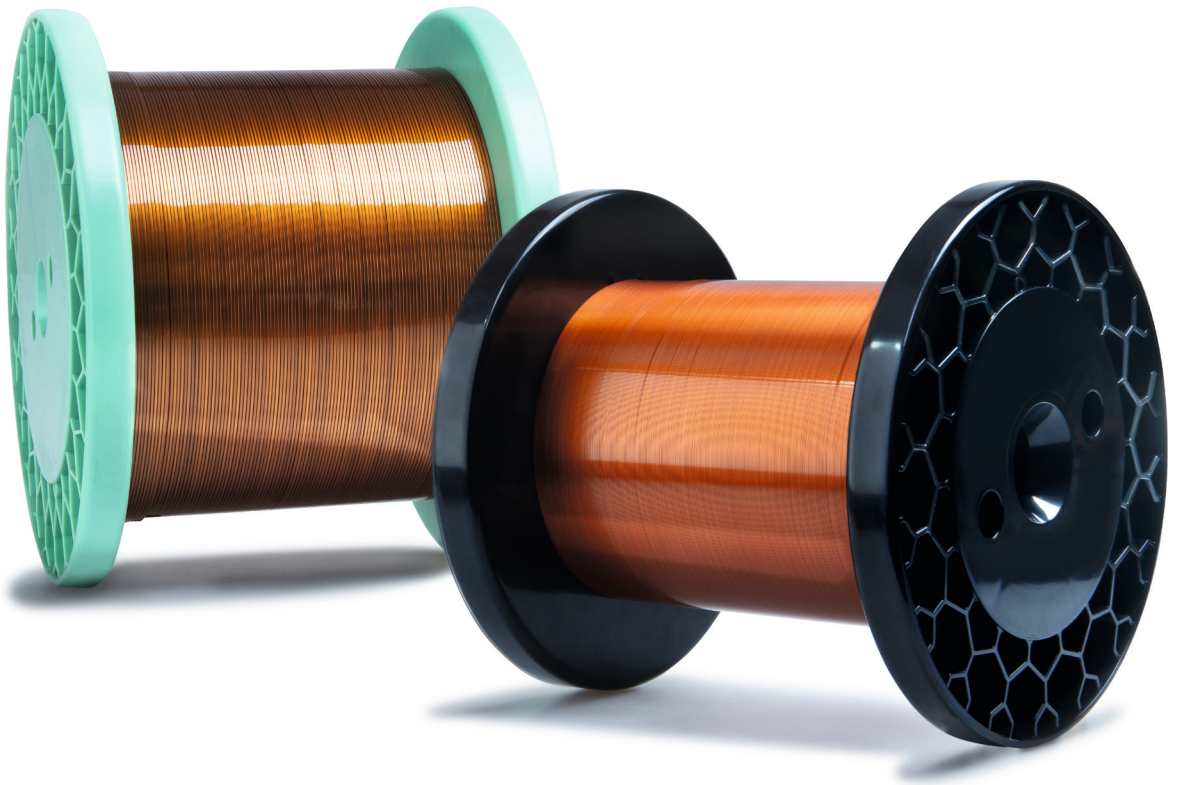


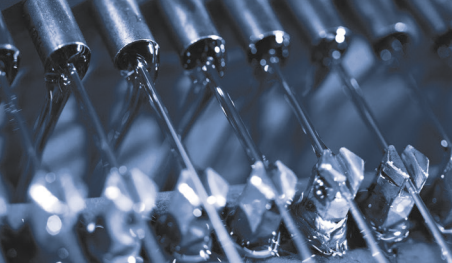
BRUKER-SPALECK

SPECIALTY WIRES

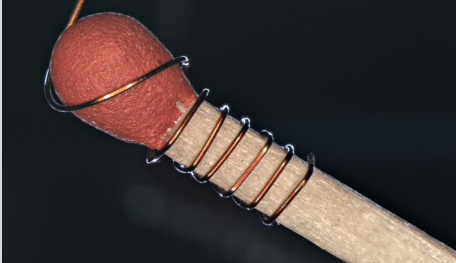
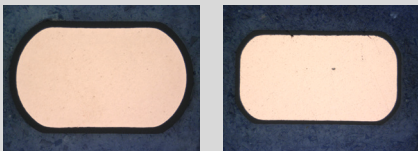
ENAMELED FLAT WIRE

PRECISE. INNOVATIVE. CUSTOMIZED.





Cross section of enameled flat wires



TECHNICAL DATA

GRADES & APPLICATIONS

Enameled Flat wire		
Base materials:	» Cu	Copper and copper alloys
	» Al	Aluminium and aluminium alloys
Additional alloys by request (e.g. heatsealing band alloys)		
Dimensions:	» Thickness:	0.030 – 0.440 mm
	» Width:	0.500 – 5.000 mm
	» Thickness / width:	max. 1 / 80
Coatings: - Enamel types - Temperature index / operating temperature	Polyurethane	V155 ≤ 157°C
		V180 / V190 ≤ 180 / 200°C
	Polyesterimide	W180V ≤ 194°C
		W200 ≤ 205°C
	Polyesterimide with polyamide top layer	W210 ≤ 210°C
	Polyamide-imide	W220 ≤ 220°C
		W240PAI ≤ 240°C
	Polyimide	W240 ≤ 240°C
	All versions are available with baked enamel top coating as an assembly aid.	
Process:	» Manufacture of the micro flat enamelled wire with high-precision enamelling and rolling technology.	
Tempers:	» Soft or according to customer specification	
Applications:	» Electric motors and drives	» Magnet coils
	» Inductive coils	» Chokes
	» Connecting elements	
Industries:	» Automotive and electromobility	» Medical
	» Electrical engineering	» Power electronics

BRUKER-SPALECK

SPECIALTY WIRES

KERN-LIEBERS Group of Companies

BRUKER-SPALECK GMBH
Weilerstraße 30
78739 Hardt
Germany
Phone +49 (0) 7422.511400-0
Fax +49 (0) 7422.511407-0
Mail info@bruker-spaleck.de

www.bruker-spaleck.de

HEERMANN

HEERMANN GMBH
Barmerfeld 14
58119 Hagen
Germany
Phone +49 (0) 2334.9288-0
Fax +49 (0) 2334.9288-11
Mail info@heermann-gmbh.de

www.heermann-gmbh.de



KERN-LIEBERS

GROUP OF COMPANIES

www.kern-liebers.com